

ACTi NVR 3.0

Quick Installation Guide

BEFORE YOU START

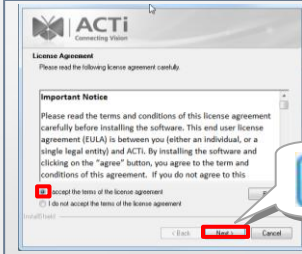
Thank you for using ACTi NVR 3.0 server system. This guide will demonstrate the fundamentals of how to setup this server system. For detailed instructions, please refer to **ACTi NVR 3.0 System Administrator's Manual**, available at <http://www.acti.com/nvr3>

The pre-requisites below are necessary for installation:

- Ensure that your server computer meets the minimum system requirements.
- Uninstall previous ACTi NVR 2.X product from the server computer.
- Disable UAC function in Windows.
- Make sure there is more than 20 GB disk space in your C drive.

INSTALL THE SERVER

Step 1



Execute and install shield application. Follow the onscreen instructions to complete the installation.

Next >

Note

If you meet the following problems, please refer to the chapters mentioned below in **ACTi NVR 3.0 System Administrator's Manual** :

1. Cannot access Login page

- (1) Server is not ready, please wait for a while and connect again.
- (2) Port 80 is currently occupied by another application, please close that application. → [Login Failure Troubleshooting](#)

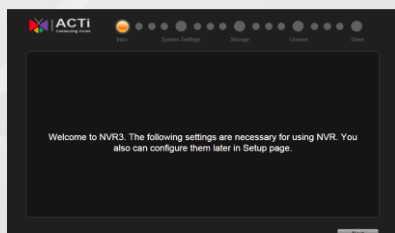
2. Cannot install the ActiveX control

- (1) Use **Internet Explorer 32-bit** version.
- (2) The UAC function in **Windows Vista/7** or bans on the installation of add-ons. Please turn off the UAC function. → [Turn off Windows UAC Function](#)
- (3) Internet Explorer security settings restrict the installation of add-on components. Please adjust the browser settings. → [Login Failure Troubleshooting](#)

SETUP WIZARD

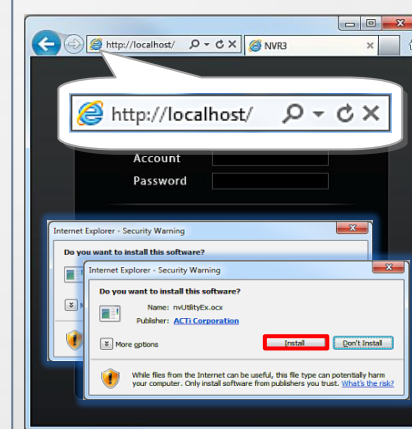
Step 4

Setup Wizard will guide you through the setup procedures. You may configure these settings on **NVR Setup** page later after this wizard.



ACCESS VIA BROWSER

Step 2

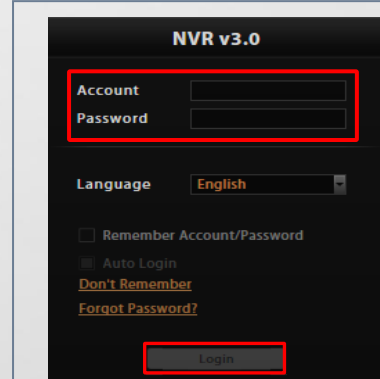


Wait for a few seconds before the server is ready. Connect to <http://localhost/> via **Internet Explorer**.

Install two ACTi ActiveX control components.

LOGIN

Step 3



On Login page, enter:

- Account: **Admin**
- Password: **123456**

Click "Login".

ADD DEVICES

Step 5

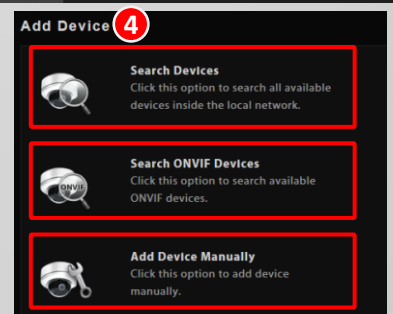
On NVR screen,

(1) Click the **Setup** button.

(2) Select "Device".

(3) On **Setup** page → **Device** tab, click "Add Device".

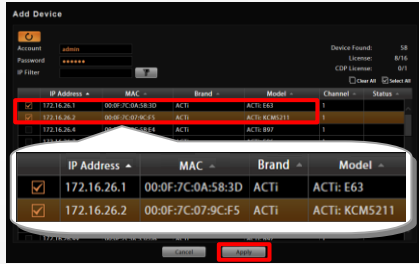
(4) Select a search method based on network environment.



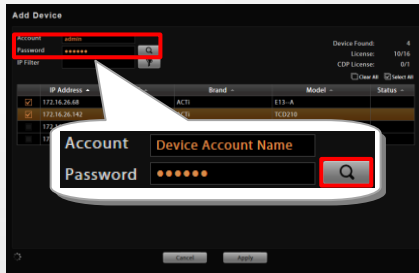
ADD DEVICES (continued)

Step 5

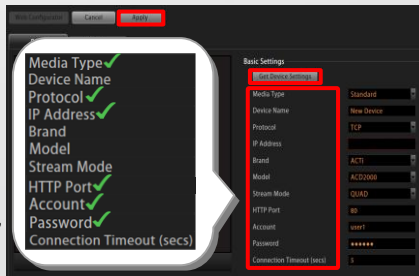
- Select “**Search Devices**” to auto-search the local network for ACTi devices. Select your devices and click “**Apply**”.



- Select “**Search ONVIF Devices**” to auto-search the local network for ONVIF-compliant devices. Fill in the device's credentials then click . Select your devices and click “**Apply**”.



- Select “**Add Device Manually**” to add devices cross-LAN or WAN. Fill in the fields **Media Type**, **Device Name**, **Protocol**, **IP Address**, **Brand**, **Model**, **Stream Mode**, **HTTP Port**, **Account** & **Password**. Click “**Get Device Settings**” then “**Apply**”.



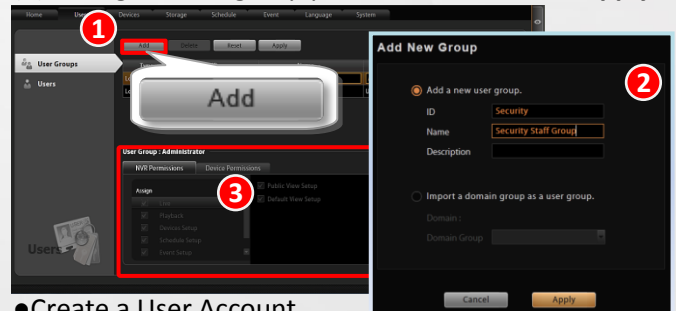
CREATE USERS

Step 6

Go to **Setup** page → **Users** tab.

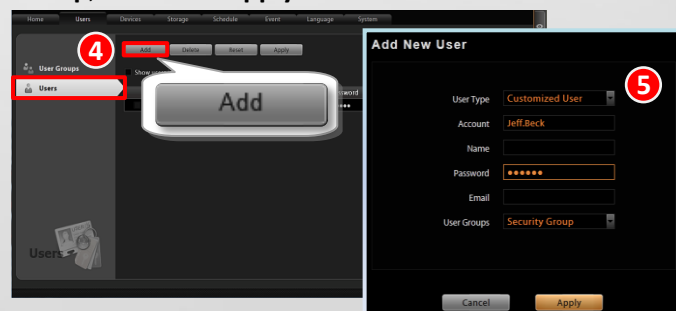
- Create a User Group

- (1) Select “**User Groups**”, click “**Add**”.
- (2) Enter group ID and click “**Apply**”.
- (3) Configure user group permissions and click “**Apply**”.



- Create a User Account

- (4) Select “**Users**”, click “**Add**”.
- (5) Enter user **Account**, **Password** and select **User Group**, and click “**Apply**”.

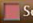



SET RECORDING SCHEDULE

Step 7

Go to **Setup** page → **Schedule** tab.

- (1) Select the device on **Device List**.

- (2) Choose recording mode:  **Schedule Recording** or  **Event Recording**



- (3) Drag on timetable.

- (4) Click “**Apply**”.

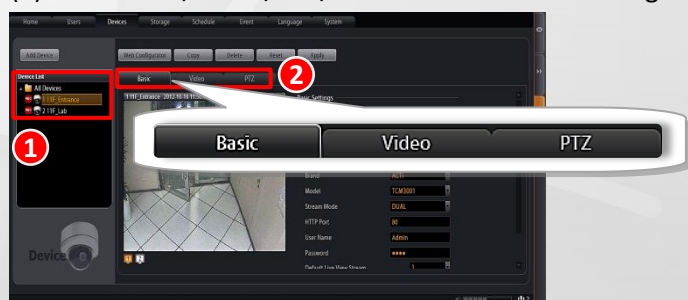
CAMERA SETTINGS

Step 8

Go to **Setup** page → **Device** tab

- (1) Select the device on **Device List**.

- (2) Enter **Basic/Video/PTZ/Preset Tour** tabs for settings.



CUSTOMIZE VIEWS

Step 9

Go to **Live View** page.

- (1) On **View Tool** bar, click  to create a new layout, then click  to enter edit mode.


- (2) Select a layout style.

- (3) • To add a camera view:

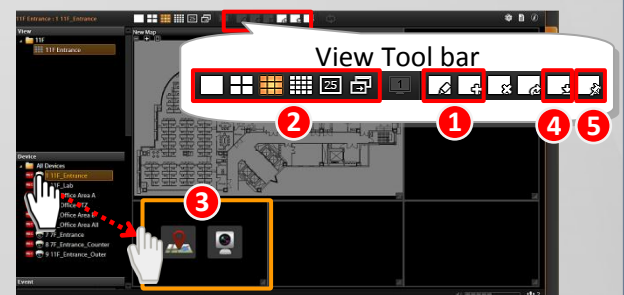
Pull a device from **Device List** to a channel.

- To add a map view:

Select a channel and click , upload the map, drag the lower right corner  to adjust map size.

- (4) On **View Tool** bar, click  to save the view.

- (5) Click  to set this view as default live view.



VALIDATION

Step 10

- (1) To check live streaming, go to **Live View** page, select certain view from **View List** or a camera from **Device List**.

- (2) To check recording, go to **Playback** page, select certain view from **View List** or a camera from **Device List**. Drag on the time bar to see the recorded video.